

“The T1 with contrast is hard to interpret, but I think the Delta T1 says it all.”

- Jennifer Connelly MD

## STANDARDIZED IMAGE POST-PROCESSING PLUG-INS

### IB Neuro

- ◆ Dynamic Susceptibility Contrast (DSC) Analysis
- ◆ Renowned for unique contrast agent leakage correction
- ◆ The only MR perfusion package with image standardization
- ◆ Report generation with ROI statistics
- ◆ Clinically validated in over 4,000 patients
- ◆ One-click “perfusion pop-up” results

### IB Delta Suite

- ◆ Multiple robust registration algorithms for inter- and intra-study registration
- ◆ Exclusive image intensity standardization allows objective longitudinal analysis
- ◆ Delta T1 maps—the novel way to automatically generate true regions of enhancement - free of blood products

### IB DCE

- ◆ Dynamic Contrast Enhanced (DCE) Analysis
- ◆ Extended Tofts, Tofts, and Patlak algorithms
- ◆ Automatic vascular input function (VIF) generation
- ◆ Fast generation of perfusion parameter maps: Ktrans, Ve, Vp, T10, Initial Slope, Time to Peak (TTP), Peak Enhancement, and Initial Area Under Curve (IAUC)
- ◆ Automatic selection of flip angle series with manual override capability

### IB Diffusion

- ◆ b-values can be read directly from DICOM headers with manual override capability
- ◆ Standard two-point ADC calculation
- ◆ Generation of normalized ADC maps

“IB plug-ins are a lifesaver. They have cut down my analysis time from hours to minutes.”

- Cathy Marszalkowski

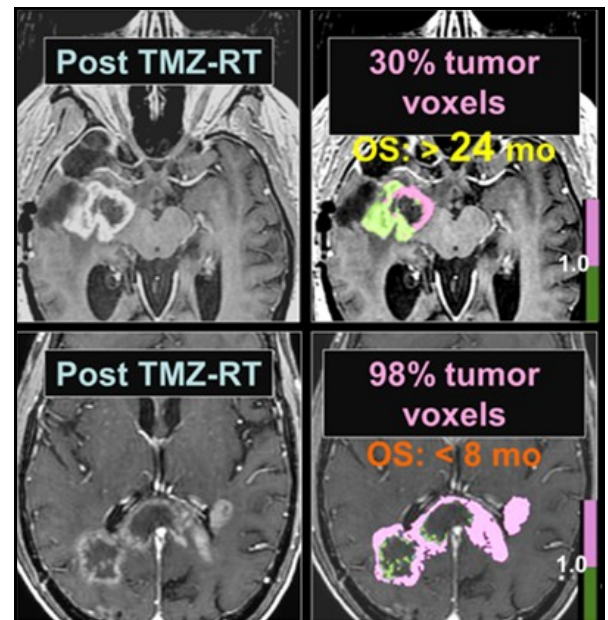
Proven • Quantitative • Vendor Neutral • Multiparametric • Fast • Standardized

“The T1 with contrast is hard to interpret, but I think the Delta T1 says it all.”

- Jennifer Connelly MD

## CUSTOMIZABLE WORKFLOW WIZARD

- ◆ Developed in collaboration with leading radiologists
- ◆ Simplified post-processing of sophisticated parameter maps, such as fractional tumor burden (FTB) and Delta T1 (dT1)
- ◆ Automatic or step-wise processing with quality assurance and built-in intelligence
- ◆ Leverages the power of IB Clinic solutions for quantitative and standardized multiparametric image analysis



- ◆ Designed specifically for routine clinical practice
- ◆ Improves research productivity and enables consistent post-processing in multi-center settings
- ◆ Seamlessly integrates into any clinical environment

“IB plug-ins are a lifesaver. They have cut down my analysis time from hours to minutes.”

- Cathy Marszalkowski

Proven • Quantitative • Vendor Neutral • Multiparametric • Fast • Standardized